

PRF Newsletter

PRF NEWS

#24 /// MAY 2021



Main ///

PRF 30 YEARS

Other Highlights ///

/// NEW
LOGO

/// SOCIAL
RESPONSABILITY

/// PRF IN RAIL
TRANSPORT OF LNG

/// NEW REFERENCE
PROJECTS



WWW.PRF.PT

Message from the CEO ///

PRF 30 YEARS

This year we celebrate 30 years of PRF. It's 30 years serving the Gas Industry. They were 30 very challenging years, we had to reinvent ourselves many times, we had to adapt, we had to know how to overcome the difficulties that appeared, but the truth is that when I try to look back and when I try to understand our past, I see, in fact, a common line, an ever-constant line of thought, a very constant line of action. Our values are the same from day one until today, and it is these values of Ethics, Rigor, Solidity, Dedication to the Client and Innovation that have always guided our activity, and it is precisely these values that we want to maintain in the future and in everything we do.

During these 30 years of activity, PRF has known how to take advantage of the opportunities that the market has brought and, without a doubt, the Natural Gas project in Portugal was a very important milestone in PRF's life. This project forced us to create new skills, create new structures, forced us to learn to work in a different way and, of course, gave us the opportunity to grow into the company we are today. And this has been PRF's way of growing, we identify opportunities, we invest in the creation of value and the training of people to develop activities and we grow in a sustained manner.

The same thing happened with LNG, with the LNG regasification plants and the vehicle filling stations. The market need arose, the opportunity arose, we were able to grab it, we were able to create the skills, we were able to create the necessary structure to develop this activity and today it is, without a doubt, one of PRF's main activities, representing a very important part of our activity.

This phase of energy transition that we are beginning to experience also brings PRF a set of opportunities that, we believe, we were able to take advantage of. We were able to identify the market needs, we were able to identify the opportunity, we created the structure, we created



the skills, two and a half years ago we created an area only dedicated to hydrogen projects, we have trained people, we have created in-house capacity to respond to market needs and we are sure that, in a very near future, the vast majority of PRF's activity will focus, with absolute certainty, in the area of renewable gases.

In fact, all the areas of activity in which PRF operates had their start in Portugal. Being a small country, the truth is that it has many opportunities and all these activities that PRF develops started here, in Portugal, and then we were able to scale and take them to many geographies. Also, in the case of projects related to hydrogen, once again we see the same thing, we are already carrying out the first projects in Portugal, and we know that in the very near future, we will also have these projects in other geographies, inside and outside Europe, where we are already discussing several projects for markets such as Europe and Latin America.

The fuel gas industry is undoubtedly going through challenging times, but clearly also great opportunities. Regardless of the challenges, we believe that the opportunities that renewable gases bring to this industry are far greater than any threats.

We are certain that with all the framework and opportunities created for the development of the renewable gases industry, we know that, in the very near future, part of our energy matrix will certainly be based on renewable gases.

At PRF we are very aware of this whole energy transformation that we will all have to do, we are very aware of the decarbonization issues and we know that it will bring a lot of opportunities for the gas industry and especially for PRF.

We know that the gas industry is undergoing a big change. We believe that the paradigm of this industry, or of the fuel industry in general, may even be changing itself, with the ease and competitiveness of local production, close to the places of consumption, of renewable energies or even renewable gases, such as hydrogen, we know that the paradigm of consumption and use of energy may change and, at PRF, we are prepared to operate this change.

In this year of celebration of our 30th anniversary, I obviously want to greet all the staff of PRF and congratulate you for the 30 years that you have been building PRF with us. I want to tell you that we know that institutions and organizations are the people who are there, and our institution is who you are. The success of these 30 years of PRF depends exclusively on you, and so I would like to congratulate you for your commitment to PRF's values and for all your efforts over these years. Thank you all.

To conclude, I must thank our clients, who have given us their trust over these 30 years, and tell you that we are totally committed to maintaining the level of service you have always known about PRF, and assure you that over the next 30 years we will be prepared to exceed your expectations, and we will do everything to ensure your satisfaction.

Paulo Ferreira
CEO

30 years celebrations

Around 20 years ago, the creation of the PRF logo alluded to the armillary sphere, from the time of the discoveries, and with this, the idea of modernity and internationalization was underlying.

After all these years, PRF has evolved. We are present in several markets, spread over three continents and internationalization is no longer a goal, but a reality for more than a decade and a half. Also, the dynamics of the company is different today.

We all feel it at PRF. We wanted this new logo to express this new reality.

From a symbol that represented a desire, that of internationalization, we have now moved on to a symbol that represents the globality of the PRF: a globe.

This globe is deconstructed to represent the dynamic and innovative capacity of the PRF.

Highlight ///

NEW LOGO

Also, the heraldic shape was changed. We now present a square. The square adds meanings such as solidity and rigor, major values for PRF. We have also changed the lettering, modernizing it, but we have kept the colors that have accompanied us throughout these years, as they are, without doubt, the visual element that most identifies us. As for the rest, nothing changes at PRF: Ethics, Rigor, Solidity, Innovation Capacity and Dedication to our clients will always be our pillars.



Gas Solutions



Main ///

PRF CELEBRATED 30 YEARS WITH AN INTERNATIONAL CONFERENCE

As part of its 30th anniversary celebrations, PRF organized an international conference dedicated to the theme *"The challenges and opportunities for the gas sector in the energy transition"*.

The debate panel brought together national and international leaders from seven companies: Fernando Sarasola, CEO of Molgas, Gabriel Sousa, CEO of GALP Gás Natural Distribuição, Gordon Canning, Technical

Director of Prima LNG, Laure-Anne Mounet, Deputy Sales Director of GNVert/Engie, Nuno Moreira, CEO of Dourogás Renovável, Pedro Furtado, Gas Regulation and Tariffs Manager of REN, and Moisés Ferreira, Business Developer of PRF. The moderation was in charge of Bárbara Silva, editor of ECO/Capital Verde. The closing session was in charge of the Deputy Secretary of State for Energy, Dr. João Galamba, which honored us.

WEB CONFERENCE

"The challenges and opportunities for the gas sector in the energy transition"
"Os desafios e oportunidades para o setor do gás na transição energética"



PART I

WELCOME SESSION

SESSÃO DE BOAS VINDAS
Paulo Ferreira, CEO/Administrador

PRESENTATION OF THE NEW LOGO

APRESENTAÇÃO DO NOVO LOGOTIPO
Manuel Fonseca, Marketing & Communication

MOOV PRESENTATION: LNG Mobile Refuelling Station

APRESENTAÇÃO MOOV: Posto móvel de GNL
Alexandre Neto, Project Manager Supervisor

INSTITUTIONAL VIDEO

VÍDEO INSTITUCIONAL

FEBRUARY, 25, 10:00 (WET)

Live: site & Facebook ECO

PART II

DEBATE:

Fernando Sarasola, CEO **MOLGAS**
Gabriel Sousa, CEO **GALP GÁS NATURAL DISTRIBUIÇÃO**
Gordon Canning, Technical Director **PRIMA LNG**
Laure- Anne Mounet, Deputy Sales Director **ENGIE**
Moisés Ferreira, Business Developer **PRF**
Nuno Moreira, CEO **DOUROGÁS RENOVÁVEL**
Pedro Furtado, Gas Regulation and Tariffs Manager **REN**

MODERATOR:

MODERAÇÃO:
Bárbara Silva, Editor **Capital Verde**

CLOSING SESSION

ENCERRAMENTO
João Galamba, Deputy State Secretary for Energy

Highlight ///



MOOV - LNG MOBILE REFUELLING STATION



MOOV is a mobile LNG refuelling station, and is a solution that emerged after we verified the difficulty that the various customers we have around the world, which are mostly gas traders, have in presenting their customers with refuelling points in a short space of time, due to the whole bureaucratic process, construction permits, civil works and all other specialties involved in the construction of a standard refuelling station.

This new concept is nothing more than an LNG station with the same technical characteristics as a standard LNG station, but where all the components are installed on top of a semi-trailer and, therefore, besides dispensing with civil works and the contracting of lifting

equipment, it is very easy and flexible to install, since the filling unit, when moved from the semi-trailer at the place of installation, can be installed in various ways that are most convenient for the end customer. This is made possible by the fact that MOOV is supplied with flexible vacuum-insulated piping and quick-fit electrical plugs, which greatly facilitates installation, enabling it to be carried out in less than 2 hours.

With this new refuelling station philosophy, we have no doubt that we are presenting customers with a new solution that, due to its versatility and high level of performance, will help them expand their business.



Highlight ///

SOCIAL RESPONSABILITY

PRF supports reforestation of the Marrazes Forest, in Leiria, with six thousand trees.

Aware of its role in preserving the environment, PRF developed an action which aims to reforest Mata dos Marrazes, in Leiria, with six thousand trees of native species, joining the development project of the Forest Management Plan "*re arboriz ação - meter as mãos na maTa*", of União das Freguesias de Marrazes e Barosa.

In this reforestation action, integrated in the 30th anniversary of the company, the following native species will be planted: Alder, Arbutus, Common Ash, Portuguese Oak, White Willow and Chestnut.

PRF intended to integrate all employees in this reforestation action, but with the restrictions associated with the pandemic, it had to be reformulated in terms of participants and was only marked in a symbolic way.

RE FLORESTAR **LEIRIA**
MATA DOS MARRAZES

NAS COMEMORAÇÕES DO 30º ANIVERSÁRIO A PRF VAI REFLORESTAR A MATA DOS MARRAZES.

6 de março • sábado

Move with us towards a greener future!

Plantação de 6000 árvores.

município de **Leiria**



Highlight ///

SOCIAL RESPONSIBILITY

Given the situation we live and assuming total commitment with our Social Responsibility, PRF - Gas Solutions donated 4 medication cars to the Leiria's Hospital Centre, so that it can reinforce the operational capacity of response of its Units to the pandemic we are going through.

These equipment's have been requested for treatment to Covid, but are also very necessary to attend other valences.

PRF donated 4 medication cars to the Leiria Hospital Centre.



Assuming its Social Responsibility, PRF has contributed with 4 trolleys of medication for the Leiria's Hospital, so that it can reinforce the operational response capacity of its Units to the pandemic we are going through.

MOVE WITH US TOWARDS A BETTER FUTURE.



Highlight ///

EMETRO AWARDED BEST FLUKE DISTRIBUTOR IN AFRICA



FLUKE

FLUKE INDUSTRIAL GROUP
Sub Saharan Africa
recognize



For delivering the highest growth in 2020

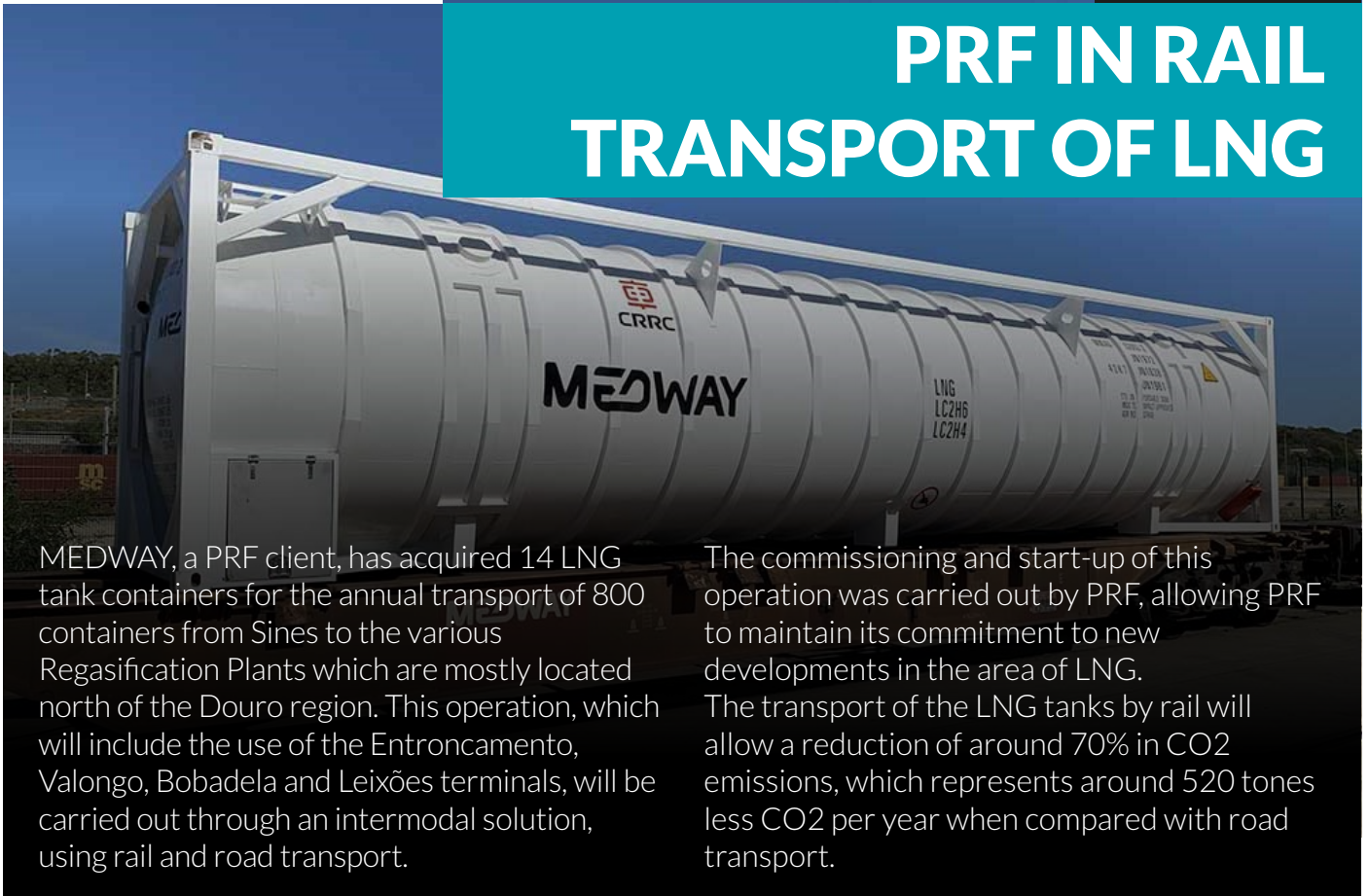
George
On behalf of Fluke Corporation
Faziz Al Nabani
Sales Director - Middle East, Africa & Turkey

EMETRO, a company of PRF - Gas Solutions group, as official and exclusive importer of Fluke branded equipment and Fluke Calibration for Mozambique, recorded, for the third consecutive year, a substantial growth in its turnover throughout sub-Saharan Africa. As a result of its selfless delivery in presenting solutions and accompanying its partners in Mozambique, EMETRO was distinguished with an honorable mention and recognized by Fluke Corporation as the best distributor in the region, having in 2020 reached the highest growth among all countries in this part of the globe.

We share this award and recognition from Fluke Corporation with all our partners, without whom it would not have been possible.

Highlight ///

PRF IN RAIL TRANSPORT OF LNG



MEDWAY, a PRF client, has acquired 14 LNG tank containers for the annual transport of 800 containers from Sines to the various Regasification Plants which are mostly located north of the Douro region. This operation, which will include the use of the Entroncamento, Valongo, Bobadela and Leixões terminals, will be carried out through an intermodal solution, using rail and road transport.

The commissioning and start-up of this operation was carried out by PRF, allowing PRF to maintain its commitment to new developments in the area of LNG. The transport of the LNG tanks by rail will allow a reduction of around 70% in CO2 emissions, which represents around 520 tones less CO2 per year when compared with road transport.

Reference Projects ///

REGASIFICATION PLANTS

PORTUGAL: Quarteira
Client: Rolar Viva



ITALY: Collio
Client: PrimaLNG

Reference Projects ///

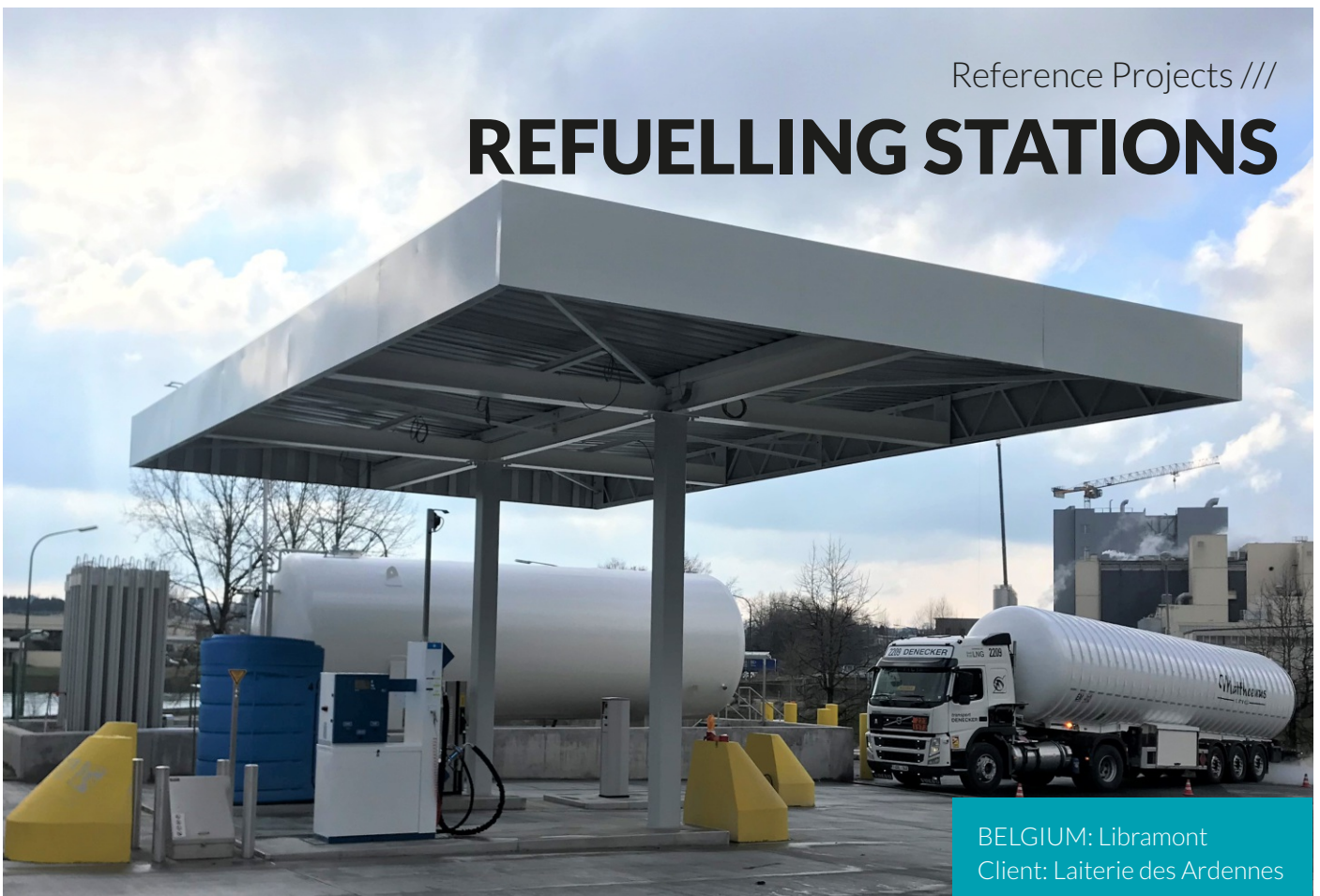
REGASIFICATION PLANTS



ANDORRA: La Comella
Client: MOLGAS

Reference Projects ///

REFUELLING STATIONS



BELGIUM: Libramont
Client: Laiterie des Ardennes

Sponsorship ///

Leiria Business School develops a set of seminars entitled "Out of the Box", which

address several innovative and disruptive themes, aiming to share ideas and opinions on trends, products, processes or services, "out of the box" that may open opportunities for companies.

The 3rd Out of the Box session took place in March and was dedicated to the topic "Green Hydrogen" and the guest was the Director of the Hydrogen Business Unit of PRF - Gas Solutions, Bruno Faustino.

LEIRIA BUSINESS SCHOOL

Out of the Box



Sponsorship ///

NOVA SCHOOL OF SCIENCE AND TECHNOLOGY



FC T UNL

WORKSHOP

DE ENERGIAS RENOVÁVEIS

1ª EDIÇÃO
O CONTRIBUTO DO HIDROGÉNIO NO CAMINHO PARA A NEUTRALIDADE CARBÓNICA

DIA 8 DE MARÇO
ONLINE VIA ZOOM

SITE
FC T UNL / P INOVA ENERGIAS

PROGRAMA
INVESTIGAÇÃO E DESENVOLVIMENTO TECNOLÓGICAS, SUSTENTABILIDADE, INOVAÇÃO EMPRESARIAL, ESTUDOS DE CASO EM HIDROGÉNIO, MESA REDONDA: O PAPEL DO HIDROGÉNIO NO CAMINHO PARA A NEUTRALIDADE CARBÓNICA

INSCRIÇÃO
ZOOM.US/JC-LINE-REG-037878

PARTICIPAÇÃO:
edp renováveis, PRF, galp, endesa, P&S

Workshop renewable energies

«The Energy Transition is an undeniable social challenge, with profound social and economic changes and impacts, depending on technical and technological advances at different levels.»

This was the framework of the Workshop, on Renewable Energies, organized by NOVA School of Science and Technologies that elected hydrogen as central theme, an energy vector rich in potentialities and challenges and full of actuality.

Among the panel of guests, was Paulo Ferreira, PRF's CEO, who was one of the speakers of this workshop.



Summit ///

CE CPLP BUSINESS SUMMIT

From 5 to 7 May took place in Malabo, Equatorial Guinea, the CE CPLP Business Summit. PRF, pursuing a policy of expansion on the African continent (where it is already in Angola and Mozambique), was part of the Portuguese delegation to this summit that brought to the country international companies from the CPLP Community, 9 countries, 4 continents and Associated Observer countries and aimed to meet the country's development guidelines in several areas.



PRF

Gas Solutions

Move with us towards the future!



PRF - GÁS, TECNOLOGIA E CONSTRUÇÃO, S.A.
/// E.N. 356/1 - Km 5,8 - Alcogulhe 2400-821 Azoia, Leiria, Portugal
/// Tel +351 244 830 800
/// geral@prf.pt /// www.prf.pt

