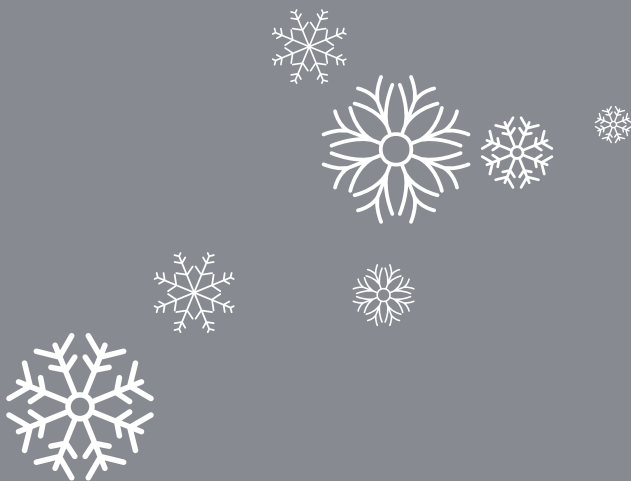




PRF
Gás, Tecnologia
e Construção, SA



info #15

// newsletter

// highlight

- Season's Greetings Message

// in focus

- Fueling station in Spain
- LSP in France
- The use of LNG as Marine fuel



Season's Greetings

The background of the page is a dark teal gradient. It is decorated with numerous white and light blue snowflake icons of various sizes and orientations. Some snowflakes are enclosed in thin white circles. Scattered throughout the background are small white dots, resembling stars or snowflakes falling.

It's what PRF wishes all its customers,
friends and partners.

That next year's challenges become opportunities for growth
and achievements. We wish a new year full of victories and that
our partnership continues to be synonymous of success!

We sincerely wish you a Merry Christmas
and a Happy New Year!

// in focus

NGV (Natural Gas Vehicles) Fueling Stations in Spain

Currently representing a reference in the area of construction of NGV supply infrastructures in several markets where it is present, PRF consolidates its position in the construction of NGV filling stations in new geographies.

The result of the continuous bet on NGV's business area, and in recognition of its competence on the part of their clients, PRF has completed one more Natural Gas filling station, this time in Algeciras, the South of Spain.



From the LNG, the installation allows the supply of both CNG and LNG.

The entire project, design and construction of the installation was carried out by PRF.

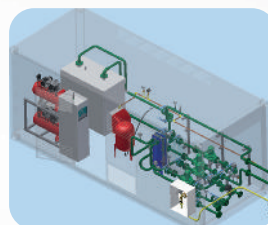
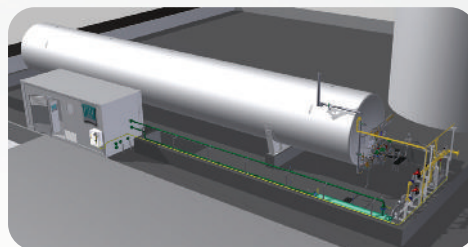


This Fueling Station represents an important step forward for the Spanish market, as it allows to fill vehicles with LNG in the South of the country, an area that was shortage in the supply of natural gas for vehicles. ■

LSPs (LNG Satellite Plant) in France

Following the activity in the French market and Central Europe, PRF has the recognition on the part of operators in this market, having already completed and put into service several LSPs.

Europe a market in clear expansion in terms of the use of LNG, this is a market in which PRF intends to grow and assert itself as a major player in the area of engineering and construction of these infrastructures.



These projects reflect the policy that PRF has adopted knowledge valorization of its technical staff and their ability to carry out projects in the global market, translated into a great efficiency and ease of construction of infrastructures in various remote locations and installation, thus contributing to a higher quality and competitiveness of our products and services. ■

info #15

newsletter

NEXT INFO

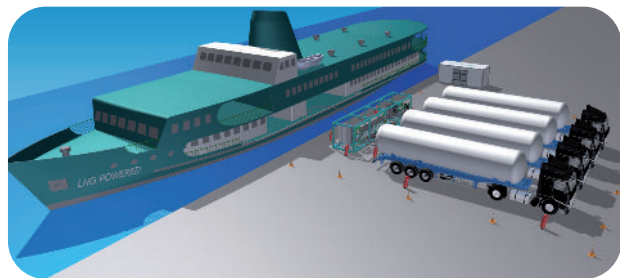
// Reference Projects



The use of LNG as Marine fuel

Attentive to environmental policies in the area of emissions of polluting gases caused by vessels that consequently led to strong developments in the area of propulsion of vessels with natural gas, PRF invests in the development of solutions for the supply of LNG to vessels.

PRF is participating in the development of several projects of bunkering, putting up so in the service of its customers in the development of this type of solutions. ■



PRF - GÁS, TECNOLOGIA E CONSTRUÇÃO, S.A.
E.N. 356/1 - Km 5,8 - Alcolgulhe
2400-821 Azoia - Leiria
Portugal

Tel +351 244 830 800
Fax +351 244 871 089
E-mail geral@prf.pt
www.prf.pt

